

# Startup Guide

User's Manual

Personal Computer

VAIO® SX12 / SX14 VJS121 / VJS141



Printed in Japan  
© 2019 VAIO Corporation

## Supplied User's Manuals

Congratulations on purchasing your VAIO computer!

Your VAIO computer comes with the following user's manuals:

### • Startup Guide (this user's manual)

Please read this user's manual first. You can find basic information, including connecting accessories to your VAIO computer, setting up Windows, and connecting your VAIO computer to the Internet.

### • Safety Guide

Please be sure to read this user's manual. You can find information that helps you use your VAIO computer safely.

### • Recovery and Troubleshooting Guide

You can find troubleshooting FAQs as well as instructions on recovering your VAIO computer and creating recovery media.

Features and apps described in these user's manuals may not be available or preinstalled, depending on the model of your VAIO computer. Also, illustrations and screenshots used in them may look different from what you actually see on your VAIO computer.

## VAIO Support Website

You can find the latest VAIO support information. When you need any help for using your VAIO computer, visit our VAIO support website first.

<https://us.vaio.com/support/>

## About the INTEL END USER SOFTWARE LICENSE AGREEMENT

Your VAIO computer includes software produced by Intel Corporation.

The End User Software License Agreement for this software is available at the following web site, please read it before using your VAIO computer.

<https://us.vaio.com/intel-eula>

## About the ENERGY STAR® International Program



The following information is applicable to ENERGY STAR qualified/certified products only.

ENERGY STAR logos are attached or electronically displayed on the following locations of ENERGY STAR qualified/certified products.

- The product

- The product packaging

As an ENERGY STAR Partner, VAIO confirmed that this product meets the ENERGY STAR requirements for energy efficiency.

The International ENERGY STAR Office Equipment Program is an international program that promotes energy saving through the use of energy efficient computers and office equipment.

The program supports the development and dissemination of products with functions that effectively reduce energy consumption to contribute to cost savings and reduction of environmental burdens.

For detailed information on the ENERGY STAR Program, visit the following websites: <http://www.energystar.gov/>

This computer is designed in compliance with the ENERGY STAR standards and delivered with the following power saving settings that apply to the computer running on AC power:

- The LCD backlight is turned off automatically after no more than 15 minutes of inactivity.

- The computer enters Sleep mode automatically after no more than 30 minutes of inactivity.

Press the Power button to bring the computer back into Normal mode.

## 1. Supplied Items

AC adapter

Power cord

SIM card (with models with wireless WAN capability)\*

Cleaning cloth

User's manuals

(See **Supplied User's manuals.**)

Warranty card

\* May not be supplied depending on your selection at purchase.

### ! Notes

• Keep the shipping box of your VAIO computer until you make sure that you have all the supplied items. If you find anything missing or damaged, contact our Support Call or your dealer before you dispose of the box.

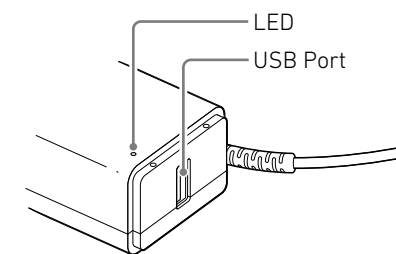
• The supplied accessories were tested and found functional solely with your VAIO computer.

• Your VAIO computer can be recovered with the built-in hard disk or SSD and does not come with any recovery media. In case you could not recover the computer using the built-in hard disk or SSD, however, be sure to create your own recovery media with a USB flash drive before you first use your VAIO computer following your purchase. For detailed instructions on creating your own recovery media or recovering the computer, refer to **Data Backup/Computer Recovery** in the **Recovery and Troubleshooting Guide**.

## Charging the external device via the USB port on the AC adapter

1 Make sure that your external device supports USB charging.

2 Connect the USB port on the AC adapter and the external device with a USB power cable, such as the one supplied with your device.

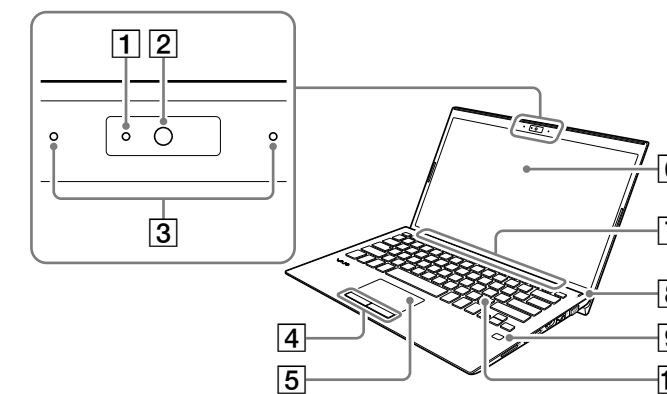


### ! Note

When current consumption of the connected device exceeds the rated current of the AC adapter, power supply to the USB port stops. The power supply restarts when the current consumption of the connected device is reduced.

Specifications: USB output, 5.0 VDC, 1.0 A  
The USB port on the AC adapter may not work with some of the USB charging enabled devices.

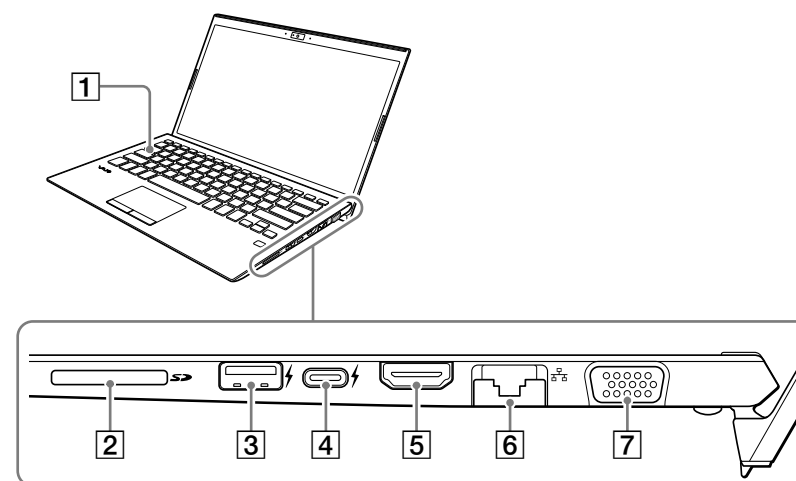
## 2. Locating Parts and Controls



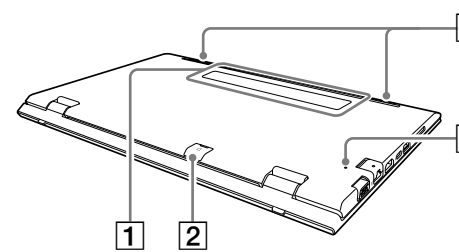
- |                     |  |
|---------------------|--|
| 1 Camera indicator  | 6 LCD screen   |
| 2 Camera            | 7 Air intake vent  |
| 3 Dual microphones  | 8  Power button/ Power indicator   |
| 4 Left/Right button | 9 Fingerprint sensor<br>(On models with fingerprint authentication capability) |
| 5 Touch pad         | 10 Keyboard  |



- |                    |                                     |
|--------------------|-------------------------------------|
| 1 DC IN port       | 4 Security lock slot                |
| 2 Charge indicator | 5 USB ports (USB 3.0×2)             |
| 3 Air exhaust vent | 6 Headset compatible headphone jack |



- |   |                    |
|---|--------------------|
| 1 <b>Caps Lock</b> indicator  | 5 HDMI output port |
| 2 <b>SD</b> memory card slot  | 6  LAN port        |
| 3  USB port (USB 3.1)<br>This port can be used for USB charging.<br>(BC 1.2 OUT)  | 7 Monitor port     |
| 4  USB Type-C™ port (USB 3.1)<br>This port supports the following standards.<br>• USB charging (BC 1.2 IN/OUT)<br>• DisplayPort Alternate Mode<br>• USB Power Delivery (IN) |                    |



- |  |
|--|
| 1 The product name plate<br>(certification notice)               |
| 2 microSIM card slot<br>(On models with wireless WAN capability) |
| 3 Stereo speakers  |
| 4 Battery off button   |

### ! Notes

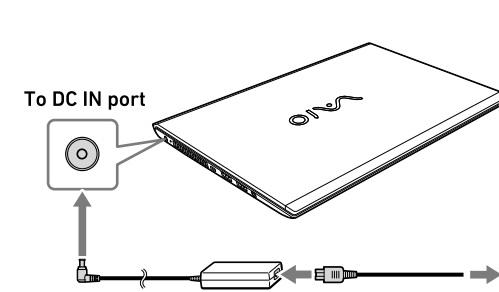
- You cannot add memory to your VAIO computer.
- While your VAIO computer is turned on, pressing the battery off button may cause loss of unsaved data. Before pressing the battery off button, be sure to save all unsaved data and turn off the computer.
- Your VAIO computer contains a non-removable battery pack.
- Screen output cannot be done simultaneously from both the monitor port and the USB Type-C™ port. The output from the USB Type-C™ port takes priority.

See the back side.

## 3. Setting Up

### 1 Connect to a Power Outlet

Plug the AC adapter to the DC IN port on the VAIO computer and connect the AC adapter and a power outlet with the supplied power cord.



#### ! Note

To connect a mobile battery or adapter that does not support USB Power Delivery to the USB Type-C™ port, use the following procedure to do the settings on your VAIO computer according to the ratings of the device you are connecting.

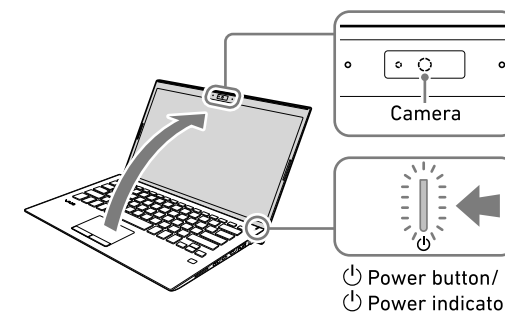
- 1 Select **Start** (start), and then select **VAIO Control Center** from the menu.
- 2 Select **Hardware**, and then in **USB Type-C Power Delivery**, select **1.0A (Output current less than 1.5A)** or **1.5A (Output current 1.5A or higher)**.

The default setting is **1.5A (Output current 1.5A or higher)**.

Some devices cannot use this function, depending on the device, even if you do the above settings.

### 2 Turn On Your VAIO Computer

Lift the LCD screen lid and press the **Power button/Power indicator** on the computer.



#### ! Notes

- When lifting the LCD screen lid, do not grasp the area around the camera as it will cause malfunctions.
- Do not turn off your VAIO computer before the Windows Setup window appears.

### 3 Set Up Windows (Initial Setup)

Follow the instructions displayed on the Windows Setup window to make initial settings.

#### ! Note

The VAIO computer you purchased may have the latest Windows 10 updates applied. With these updates applied, some alterations may be required to the operation procedures on the Windows Setup window described in this document. Please refer to Windows Help or Microsoft's website for more details. Information is also available on our support page. <https://us.vaio.com/support/>

### 4 Connect to the Internet

Before connecting to the Internet, you need to select a connection service, make a contract with an Internet service provider accordingly, and make the Internet connection settings on your VAIO computer. With your VAIO computer, you can connect to the Internet either via a Wi-Fi (wireless LAN) or wired LAN network. For detailed information on the Internet connection settings and required network devices, refer to the manual from your service provider and the manual that came with your device. Establishing a successful connection to the Internet completes Windows license authentication.

#### Connecting via a Wi-Fi network

- 1 Select **Start** (start), **Settings** (Settings), **Network & Internet**, and **Wi-Fi**, and then set **Wi-Fi** to **On**.
- 2 Select **Show available networks**.
- 3 Select the desired Wi-Fi access point, and then select **Connect**.

#### Connecting via a Wired LAN network

- 1 Plug one end of a LAN cable (not supplied) to the **LAN** port on your VAIO computer and the other to your modem/router.

### 5 Get Ready to Use Your VAIO Computer

#### Running Windows Update

- 1 Select **Start** (start), **Settings** (Settings), and **Update & security**.
- 2 Select **Windows Update** and follow the on-screen instructions to update the Windows.

#### Updating VAIO original software

To update VAIO original software, visit our VAIO support website at the following URL, download update programs, and then install them on your VAIO computer. <https://us.vaio.com/support/>

### 6 Creating your own recovery media

Your VAIO computer does not come with any recovery media. Be sure to create your own recovery media with a USB flash drive before you first use the computer following your purchase. For more information, refer to the **Recovery and Troubleshooting Guide**.

#### ! Note

Always be sure to use the AC adapter to connect your VAIO computer to a power outlet before doing a recovery.

#### ! Hint

To turn off your VAIO computer or place it into Sleep mode after the above preparations, select **Start** (start), **Power** (Power), and **Shut down** or **Sleep**.

## 4. Using Fingerprint Authentication (On models with fingerprint authentication capability)

On your VAIO computer, you can use the fingerprint sensor to access the **Windows Hello** functions. The **Windows Hello** functions include signing in to the Windows user account for which you have enrolled your fingerprint. For more details on the functions and setup of **Windows Hello**, refer to the **Windows Hello** help.

### Enrolling your fingerprint

Follow these steps to set up **Windows Hello** and enroll your fingerprint.

- 1 Select **Start** (start), **Settings** (Settings), and **Accounts**.
- 2 Select **Sign-in options** and set your password. If you have already set your password, proceed to step 3.
- 3 Select **Set up** under **Fingerprint**. Then, follow the on-screen instructions. If you have not set a PIN, set it at the end of the procedure.

To scan your fingerprint, put your finger on the fingerprint sensor.



#### Notes on fingerprint authentication

- The fingerprint authentication technology does not assure complete verification of personal identity, nor does it guarantee absolute protection of your data and hardware. VAIO Corporation assumes no liabilities arising out of your use of or inability to use the fingerprint sensor.
- The fingerprint recognition rate varies depending on your use of the fingerprint sensor. It is not consistent among individuals as well.
- Keep the fingerprint sensor unscratched and clean to avoid malfunctions.
- Please be aware that your enrolled fingerprint data may be erased in the course of repair work to your VAIO computer.
- When you enroll fingerprints, be sure to enroll more than one finger, in case of injuries.
- Depending on the state of your fingerprint or your use of the fingerprint sensor, enrollment or authentication of the fingerprint may fail. When fingerprint authentication fails, try the following:
  - Use another finger.
  - Clean the finger.
  - Delete the fingerprint already enrolled, and then enroll it once again.
- During a dry season, such as winter, be sure to touch a metal object to discharge static electricity from your body before scanning your fingerprint. Static electricity may cause malfunctions of the fingerprint sensor.
- If you have enabled fingerprint authentication for recovery from Sleep mode, your VAIO computer may recover from Sleep mode unintentionally if something touches the fingerprint sensor, such as while you are carrying it in a bag.

## 5. Inserting the SIM Card (On models with wireless WAN capability)

If your VAIO computer has wireless WAN capability, you can insert your SIM card (microSIM card) into the microSIM card slot on the computer for wireless WAN communications.

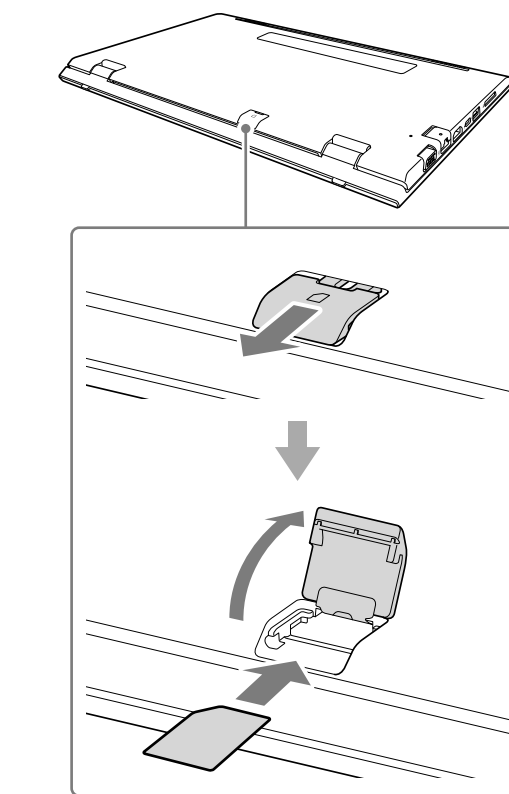
### 1 Turn Off Your VAIO Computer

### 2 Insert Your SIM Card to the microSIM Card Slot on the Back of the Computer

Insert the SIM card with the contacts facing down.

#### ! Hint

On the lid of the microSIM card slot, there is a mark depicting how the SIM card should be inserted.



#### ! Notes

- Do not touch the contacts on the SIM card while inserting or removing the SIM card. In the meantime, be sure to hold your VAIO computer firmly.
- Do not bend the SIM card or exert excessive force on it to avoid damage to the card.
- Wireless WAN communications will not be available unless the SIM card is properly inserted.

### 3 Make Settings for the SIM Card

For detailed setting instructions, refer to the manual that came with your SIM card.

#### ! Note

Depending on your carrier, your VAIO computer may need firmware specific to the carrier for wireless WAN communications. If the window indicating a firmware change appears when you turn on the computer with your SIM card inserted, do not place the computer into Sleep mode or turn off the power. Note that the computer is disconnected from the network while the firmware change is in progress.

## FCC Information

### Supplier's Declaration of Conformity

Trade Name: VAIO  
Model No.: VJS121C11L, VJS141C11L  
Manufacturer: VAIO CORPORATION  
Responsible Party: TRANSCOSMOS AMERICA, INC.  
Address: 879 West 190th Street, Suite 410, Gardena, CA 90248  
Telephone No.: 855-981-8246  
This device complies with Part 15 of the FCC Rules. Operation is subject to the following two conditions:  
(1) this device may not cause harmful interference, and  
(2) this device must accept any interference received, including interference that may cause undesired operation.